

AGUA

PERFORMANCE UPHOLSTERY FABRICS

Parody Collection

Fabric looking faux leather
for indoor upholstery

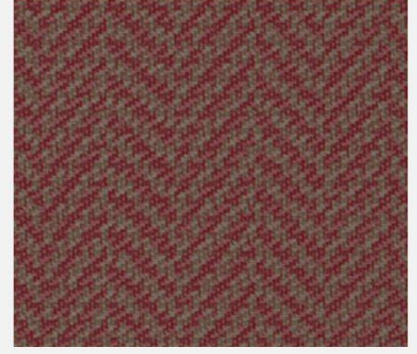




Weave Candy



Weave Crocus



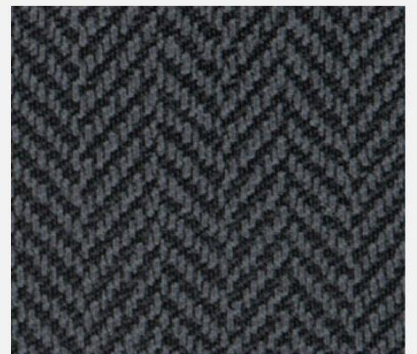
Weave Russet



Weave Ocean



Weave Sea Grass



Weave Charcoal



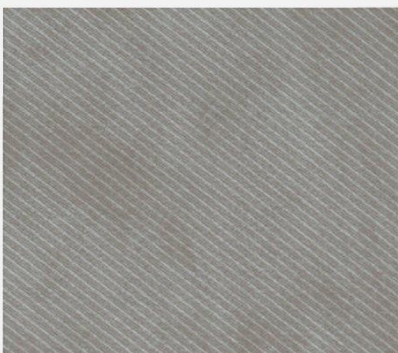
Weave Oatmeal



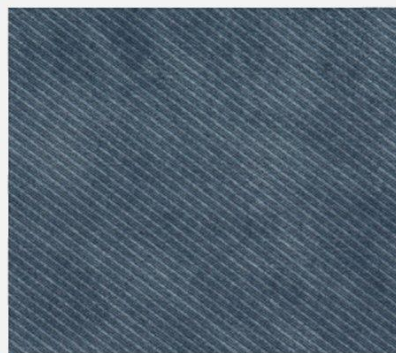
Weave Coffee



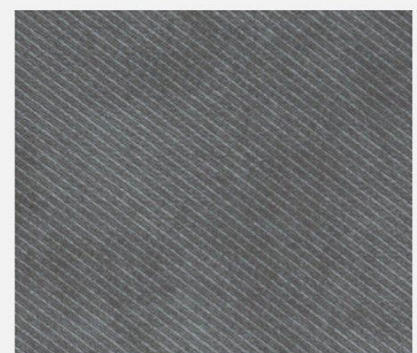
Weave Olive



Denim Sand



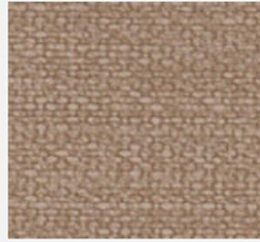
Denim Ocean



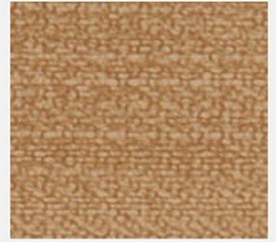
Denim Charcoal



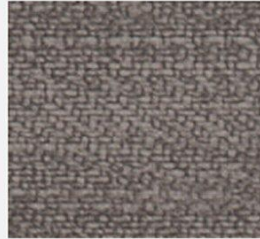
Linen Light Grey



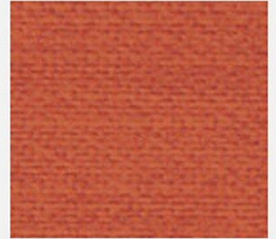
Linen Sand



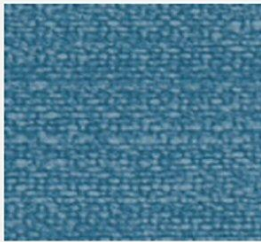
Linen Gold



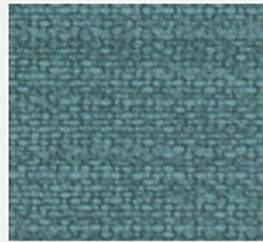
Linen Slate



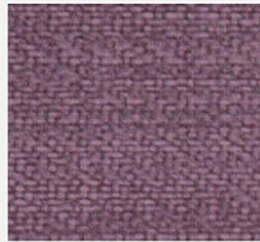
Linen Burnt Orange



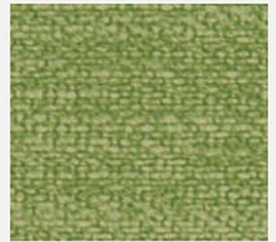
Linen Denim



Linen Duck Egg



Linen Grape



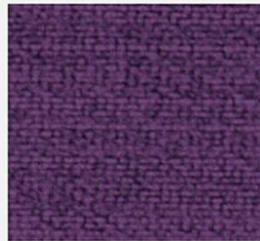
Linen Lime



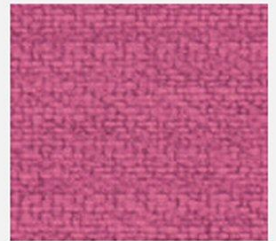
Linen Midnight



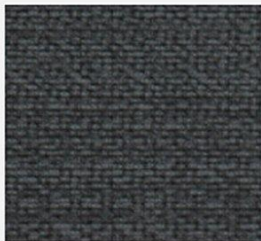
Linen Teal



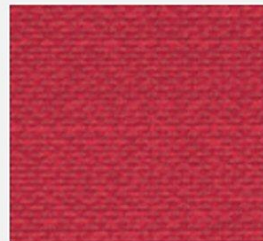
Linen Purple



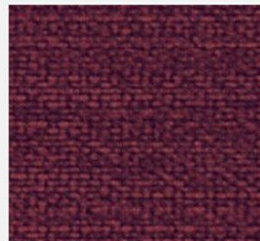
Linen Orchid



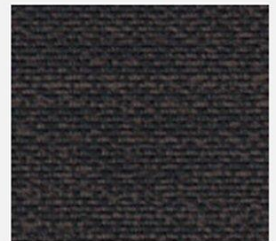
Linen Charcoal



Linen Red



Linen Plum



Linen Truffle

Parody

Fabric looking faux leather for indoor upholstery

Perfect for:

Commercial, Cruise, healthcare, hospitality and leisure

Fabric Specifications

<i>Flame retardant</i>	BS7176 Crib 5, BS EN 1021-1:2006 1&2, BS5852 Crib 5, IMO Annex 1 Part 8, M2	
<i>Anti-bacterial/Anti-fungal</i>	Resistant to microbial or fungal growth including Salmonella, E Coli and MRSA	
<i>Waterproof</i>	Hydrostatic Head BS3424 > 1 metre	
<i>Martindale</i>	Severe Contract > 100,000	
<i>Composition</i>	Denim 70% PVC, 30% Cotton	Weave/Linen 2% PU, 74% PVC, 12% Polyester, 12% Cotton
<i>Weight</i>	Denim 740g ±5%	Weave/Linen 650g ±5%
<i>Width</i>	140cm	
<i>Pattern repeat</i>	Weave 25mm Horizontal Denim/Linen No pattern repeat	15mm Vertical
<i>Stain resistant</i>	Excellent stain removal has been observed for grease, ink, blood, urine, coffee, iodine, betadine, ketchup, chewing gum, chocolate, grape juice	

Technical Information

We recommend a minimum of 32 stitches per 10 cm (8 stitches per inch) and seams must have a minimum 12mm (0.5") bite on the fabric.

Can be stitched, tacked and glued. Cannot be heat welded.

Please note that all fabric offered is subject to minor tolerance in respect of shade and other slight variations.

Parody can be colour co-ordinated with other Agua collections to produce stunning dual textured finishes.

Bespoke colours can be produced subject to minimum quantity orders

Technical specifications may be amended, please check for the latest information.

Please ask if you require a sample of the current batch available but be aware that stock can move quickly.

Fabric Care

Use a vacuum cleaner or soft brush to remove dust and solid particles.

Always try cleaning products on a hidden piece of fabric to test suitability.

Wipe frequently with a damp cloth to maintain the appearance of the fabric.

All spillages should be removed immediately with a clean absorbent cloth.

Most stains can be removed using cold/warm water and a clean microfibre cloth, however poorly fixed clothing dyes may cause permanent staining.

Stains from products containing oil and grease should be treated with a spirit based solution.

If soap based cleaners are used, all soap residues must be rinsed from the fabric.

Can be cleaned with mild Hypochlorite solutions (up to 10,000 ppm of available chlorine - including Haz Tabs and Chlor-Clean) or Mineral Spirit for infection control purposes.

Can be steam cleaned in situ.

Do not machine wash or dry clean.

Do not use solvents, chemical agents, waxes or polishes as this will damage the surface of the fabric.

Use cold water when treating stains caused by bodily fluid.

Do not use marker pens on the back of the fabric.

Please refer to the Care Sheet on the Agua website for further details.

Samples and enquiries

You can contact us for samples, order enquiries or information about any of our fabric ranges here:

VYVA FABRICS

TT. VASUMWEG 140
1033 SH AMSTERDAM THE NETHERLANDS
TEL +31 (0)20 6599523 INFO@VYVAFABRICS.NL
WWW.VYVAFABRICS.NL



Certificate No. FS531220

AGUA