

# AGUA

PERFORMANCE UPHOLSTERY FABRICS

## Lunar Collection

Faux leather for indoor upholstery



Lunar Collection | v. 8.7



Anti-Microbial



Bleach Cleanable



Fire Retardant  
Crib 5/IMO



Stain Resistant



Waterproof



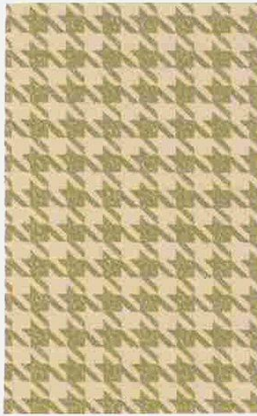
Martindale Abrasion  
Severe Contract



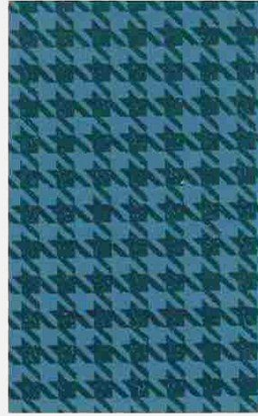
Phthalate Free



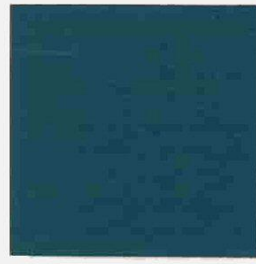
REACH  
Compliant



Lunar Canis Cream



Lunar Canis Cornflower



Lunar Scorpio Navy



Lunar Scorpio Plum



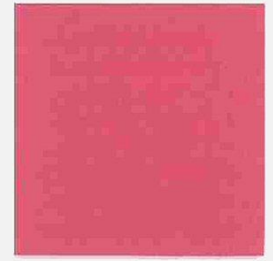
Lunar Canis Apple



Lunar Canis Sky



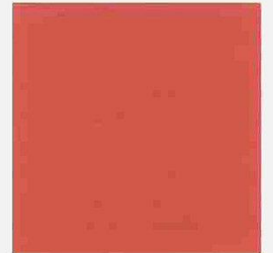
Lunar Scorpio Cornflower



Lunar Scorpio Rose



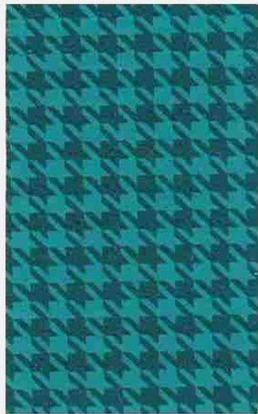
Lunar Scorpio Sky



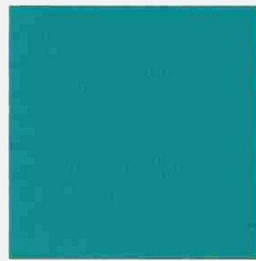
Lunar Scorpio Terracotta



Lunar Canis Rose



Lunar Canis Teal



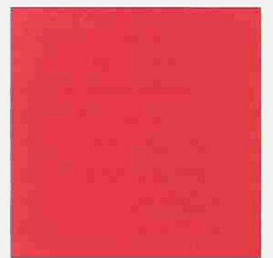
Lunar Scorpio Teal



Lunar Scorpio Red



Lunar Scorpio Chestnut



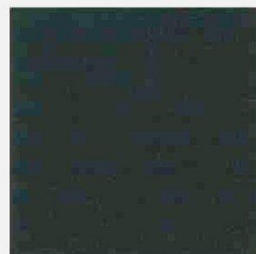
Lunar Scorpio Crimson



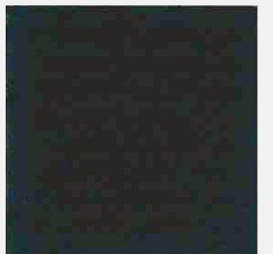
Lunar Canis Plum



Lunar Canis Grey

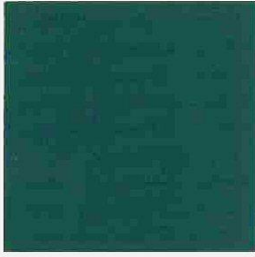


Lunar Scorpio Dark Brown



Lunar Scorpio Black





Lunar Scorpio Emerald



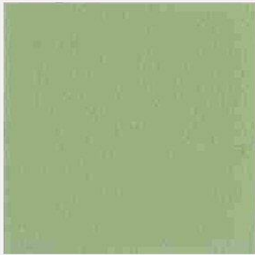
Lunar Aquarius Emerald



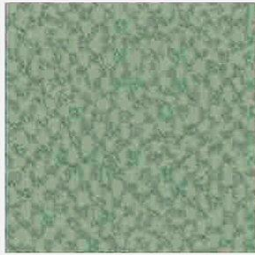
Lunar Aquarius Plum



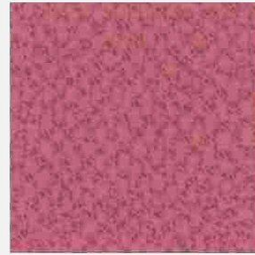
Lunar Aquarius Navy



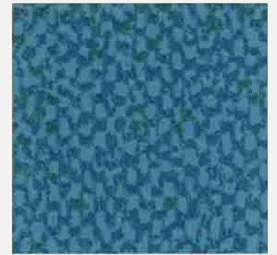
Lunar Scorpio Apple



Lunar Aquarius Apple



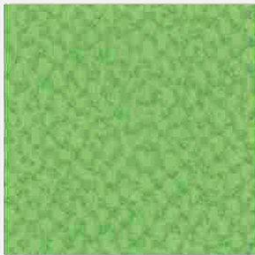
Lunar Aquarius Rose



Lunar Aquarius Cornflower



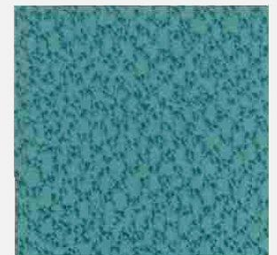
Lunar Scorpio Green



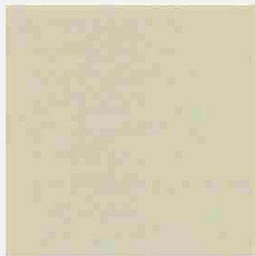
Lunar Aquarius Green



Lunar Aquarius Terracotta



Lunar Aquarius Sky



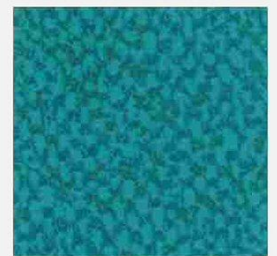
Lunar Scorpio Cream



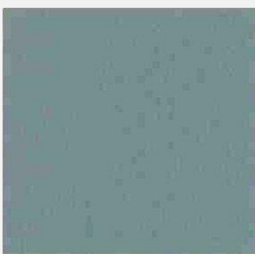
Lunar Aquarius Cream



Lunar Aquarius Red



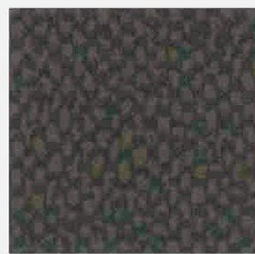
Lunar Aquarius Teal



Lunar Scorpio Grey



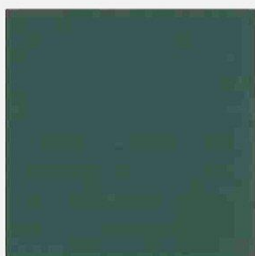
Lunar Aquarius Grey



Lunar Aquarius Chestnut



Lunar Aquarius Dark Brown



Lunar Scorpio Dark Grey

# Lunar

A faux leather upholstery fabric for indoor seating

## Perfect for:

Commercial, cruise, healthcare, hospitality and leisure

## Fabric Specifications

<i>Flame retardant</i>	BS7176 Crib 5, BS EN 1021-1:2006 1&2, BS5852 Crib 5, IMO Annex 1 Part 8
<i>Anti-bacterial/Anti-fungal</i>	Resistant to microbial or fungal growth including Salmonella, E Coli and MRSA
<i>Waterproof</i>	Hydrostatic Head BS3424 > 1 metre
<i>Martindale</i>	Severe Contract > 400,000
<i>Stain resistant</i>	Excellent stain removal has been observed for grease, ink, blood, urine, coffee, iodine, betadine, ketchup, chewing gum, chocolate, grape juice
<i>Composition</i>	2% Vinyl Acrylic, 74% PVC, 16% Polyester, 8% Cotton
<i>Weight</i>	750 gsm ( $\pm 37$ )
<i>Width</i>	140cm (53") wide

## Technical Information

We recommend a minimum of 32 stitches per 10 cm (8 stitches per inch) and seams must have a minimum 12mm (0.5") bite on the fabric.

Can be stitched, tacked and glued. Cannot be heat welded

Please note that all fabric offered is subject to minor tolerance in respect of shade and other slight variations

Lunar can be colour co-ordinated with other Agua collections to produce stunning dual textured finishes.

Bespoke colours can be produced subject to minimum quantity orders

Technical specifications may be amended, please check for the latest information.

Please ask if you require a sample of the current batch available but be aware that stock can move quickly.

## Fabric Care

Use a vacuum cleaner or soft brush to remove dust and solid particles.

Always try cleaning products on a hidden piece of fabric to test suitability.

Wipe frequently with a damp cloth to maintain the appearance of the fabric.

All spillages should be removed immediately with a clean absorbent cloth.

Most stains can be removed using cold/warm water and a clean microfibre cloth, however poorly fixed clothing dyes may cause permanent staining.

Stains from products containing oil and grease should be treated with a spirit based solution.

If soap based cleaners are used, all soap residues must be rinsed from the fabric.

Can be cleaned with mild Hypochlorite solutions (up to 10,000 ppm of available chlorine - including Haz Tabs and Chlor-Clean) or Mineral Spirit for infection control purposes.

Can be steam cleaned in situ.

Do not machine wash or dry clean

Do not use solvents, chemical agents, waxes or polishes as this will damage the surface of the fabric.

Use cold water when treating stains caused by bodily fluid.

Do not use marker pens on the back of the fabric.

Please refer to the Care Sheet on the Agua website for further details.

## Samples and enquiries

You can contact us for samples, order enquiries or information about any of our fabric ranges here

Agua Fabrics Ltd,  
Hyde House,  
The Hyde, London NW9 6LH  
T +44 (0)20 8205 0050  
F +44 (0)20 8205 0660  
E info@aguafabrics.com  
www.aguafabrics.com



Certificate No. F5531220

# AGUA

PERFORMANCE UPHOLSTERY FABRICS