

**C&L Textiles** Coated Waterproof Fabrics

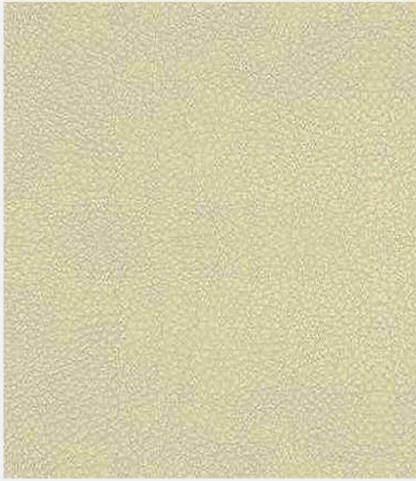
&

**SOMTEX LTD**

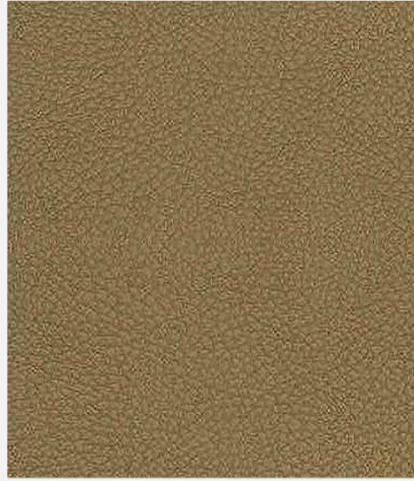
**HARLEM FAUX LEATHERS**

55 Churchill Way  
Lomeshaye Industrial Estate  
Nelson, Lancashire BB9 6RT  
Telephone: 01282 695278 Fax: 01282 698647  
Website: [www.careandleisuretextiles.com](http://www.careandleisuretextiles.com)

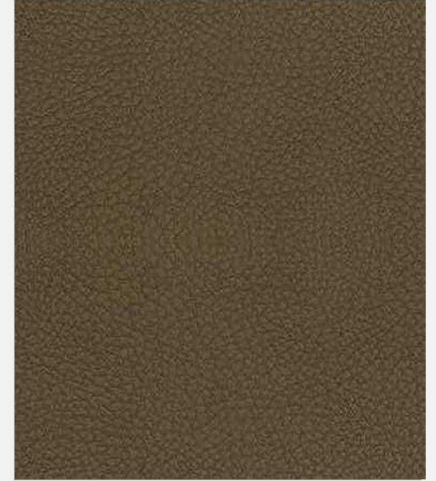
**HARLEM - FAUX LEATHER UPHOLSTERY FABRIC**



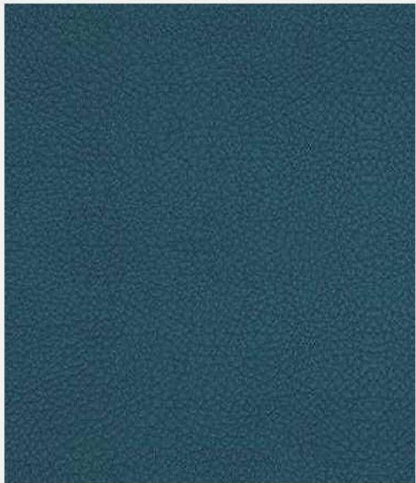
**Ecrú**



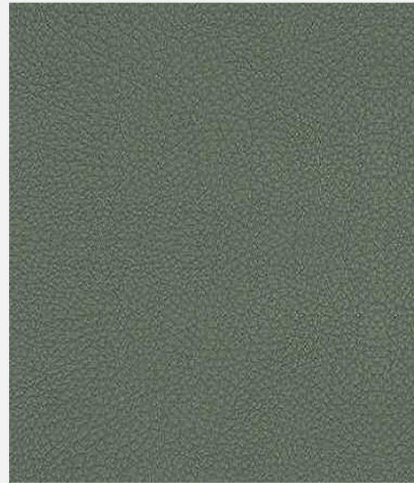
**Coffee**



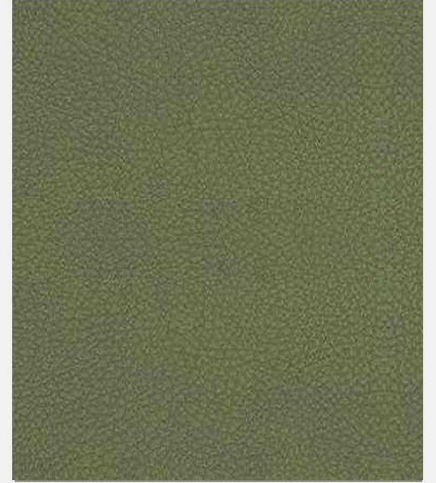
**Stone**



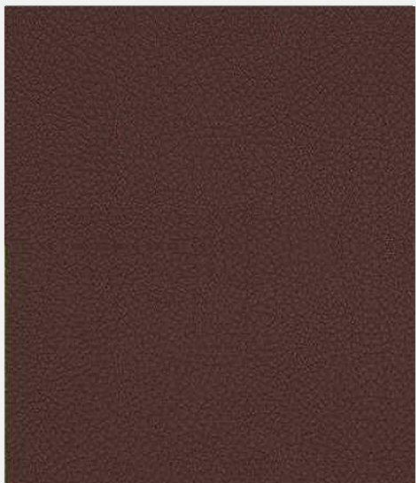
**Ocean**



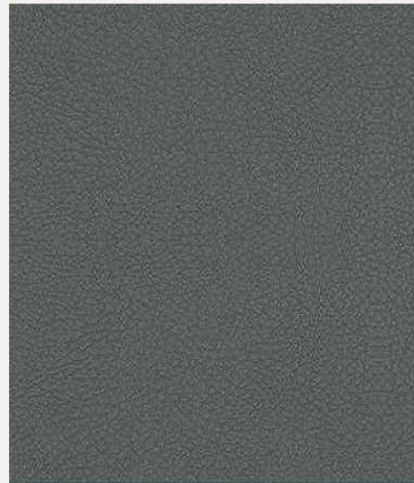
**Slate**



**Sage**



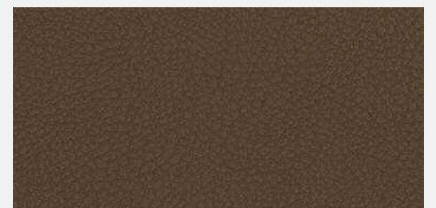
**Ruby**



**Fondant**



**Cherry**



**Saddle**

**For use in healthcare, hotels, restaurants & leisure. Not suitable for loose covers.**



**Domestic/Contract Furnishing Fabrics**  
**Also for use in Healthcare Environment**

Fabric Composition:	Back - Polycotton. Face - Polyurethane FR.
Flame Retardant:	BS5852 0 & 1 BS5852 Crib 5
Usage::	Domestic Upholstery Severe Contract - Waterproof Urine Resistant
Width:	137cm
Abrasion:	200,000 Martindale
Cleaning:	Clean regular with damp cloth or sponge
Thorough Cleaning:	Luke warm water and mild alkaline free soap.
DO NOT USE:	Wax polish, abrasive or solvent cleaning products
Antibacterial/ Antifungal:	Will not support microbial growth including: Aspergillus Niger, E Coli, Altinata, Salmonella Penicillium, Staphylococcus Aureus, Cladosporium Herbarism

55 Churchill Way  
Lomeshaye Industrial Estate  
Nelson  
Lancashire BB9 6RT  
Telephone: 01282 695278 Fax: 01282 698647