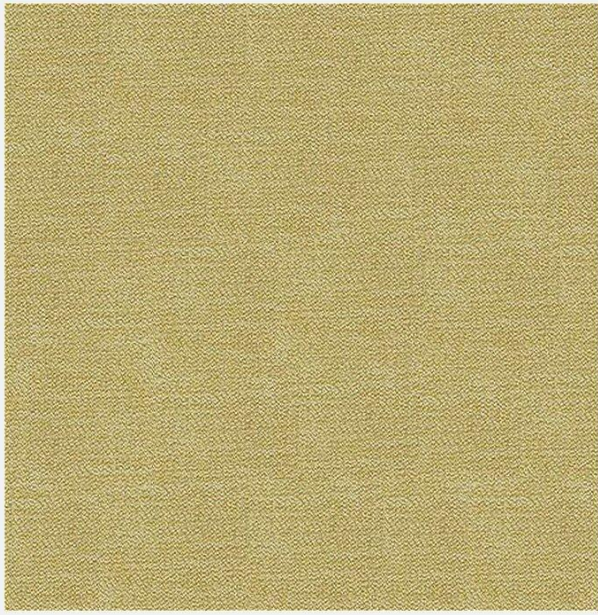


C&L Textiles Coated Waterproof Fabrics
&
Somtex Ltd

Gracelands

55 Churchill Way
Lomeshaye Industrial Estate
Nelson, Lancashire BB9 6RT
Telephone: 01282 695278 Fax: 01282 698647
Website: www.careandleisuretextiles.com

GRACELANDS Waterproof Upholstery Fabric



Gold



Azure



Beige



Stone



Silver



Taupe



Bark



Mallow



Grape



Duck Egg



Charcoal



Citrus



Spice



Raspberry

For use in healthcare, hotels, restaurants & leisure. Not suitable for loose covers.

**Care and Leisure Contract Furnishing Fabrics
Also for use in Healthcare Environment**

Fabric Composition:	92% Polyester 8% Nylon, treated with fluorocarbon and Microporous Polymers and Flame Retardant
Flame Retardant:	BS5852 0 & 1 BS5852 Crib 5
Breathable:	Moisture Vapour Permeable BS3546 65%
Waterproof:	Hydrostatic Head BS3424 1 Metre
Martindale Abrasion:	> 40,000
Tear Strength:	BS4303 (Severe Contract)
Tensile Strength:	BS EN 150 13934 (Severe Contract)
Urea Resistance:	BS 3424 Part 19 No Deterioration after 24 hrs 5.5PH 8.8PH Urea Soak
Flex Text:	BS 4818 no change after urea soak & 5000 flex's
Antibacterial/ Antifungal:	Will not support microbial growth including: Aspergillus Niger, E Coli, Altinata, Salmonella Penicillium, Staphylococcus Aureus, Cladosporium Herbarism

Cleaning & Maintenance

- Vacuum Frequently to keep colours fresh and prolong wear.
- Use soap and warm water for ordinary soiling.
- For Stubborn stains use antiseptic cleaning agents or a safe solvent based cleaner or Mineral Spirit.
- Full immersion in water is not recommended.
- Do not Dry Clean or Tumble Dry.
- Wiping and hang drying is the best method.
- Ensure all detergents are rinsed out thoroughly.

For further details please contact our offices.

55 Churchill Way
Lomeshaye Industrial Estate
Nelson
Lancashire BB9 6RT
Telephone: 01282 695278 Fax: 01282 698647