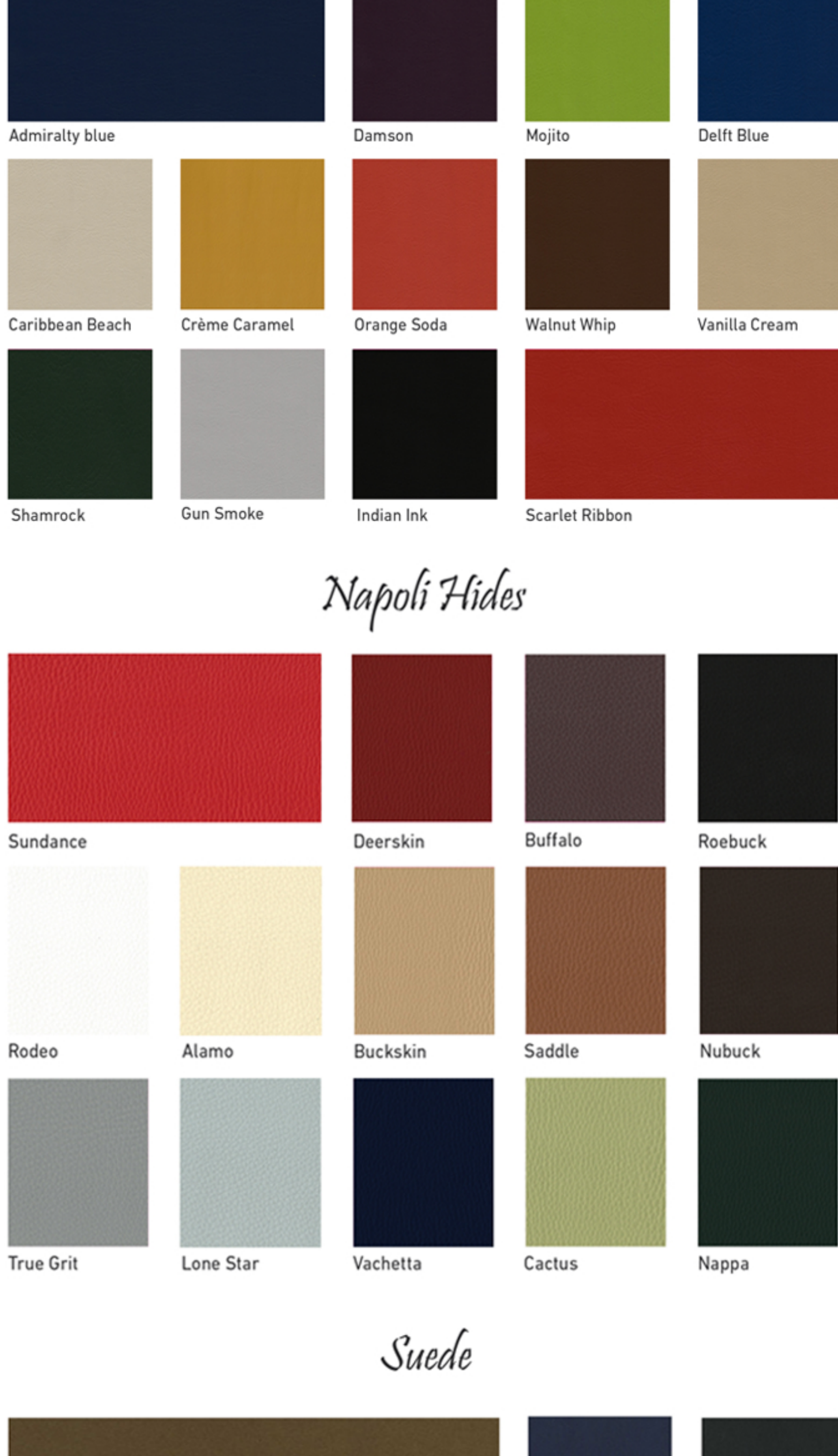




Colour Heaven

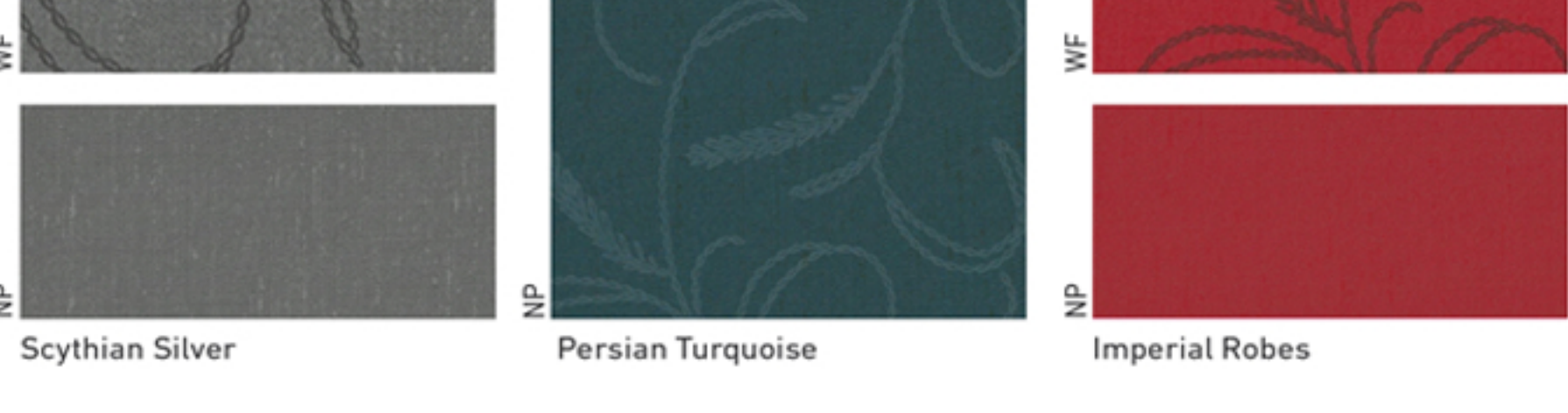
with **stainerase**



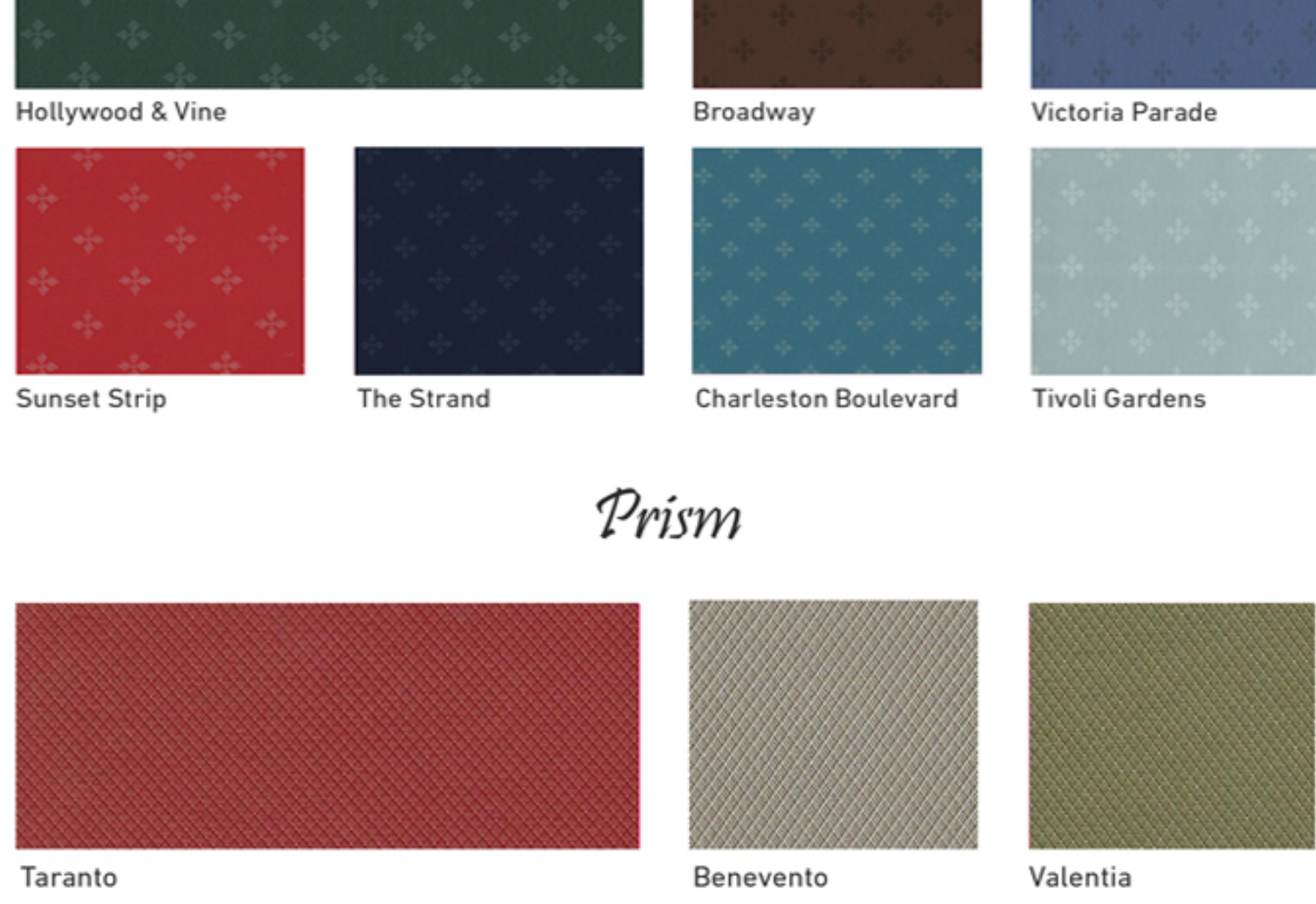
Napoli Hides



Suede



West End



Silk Road



Boulevard

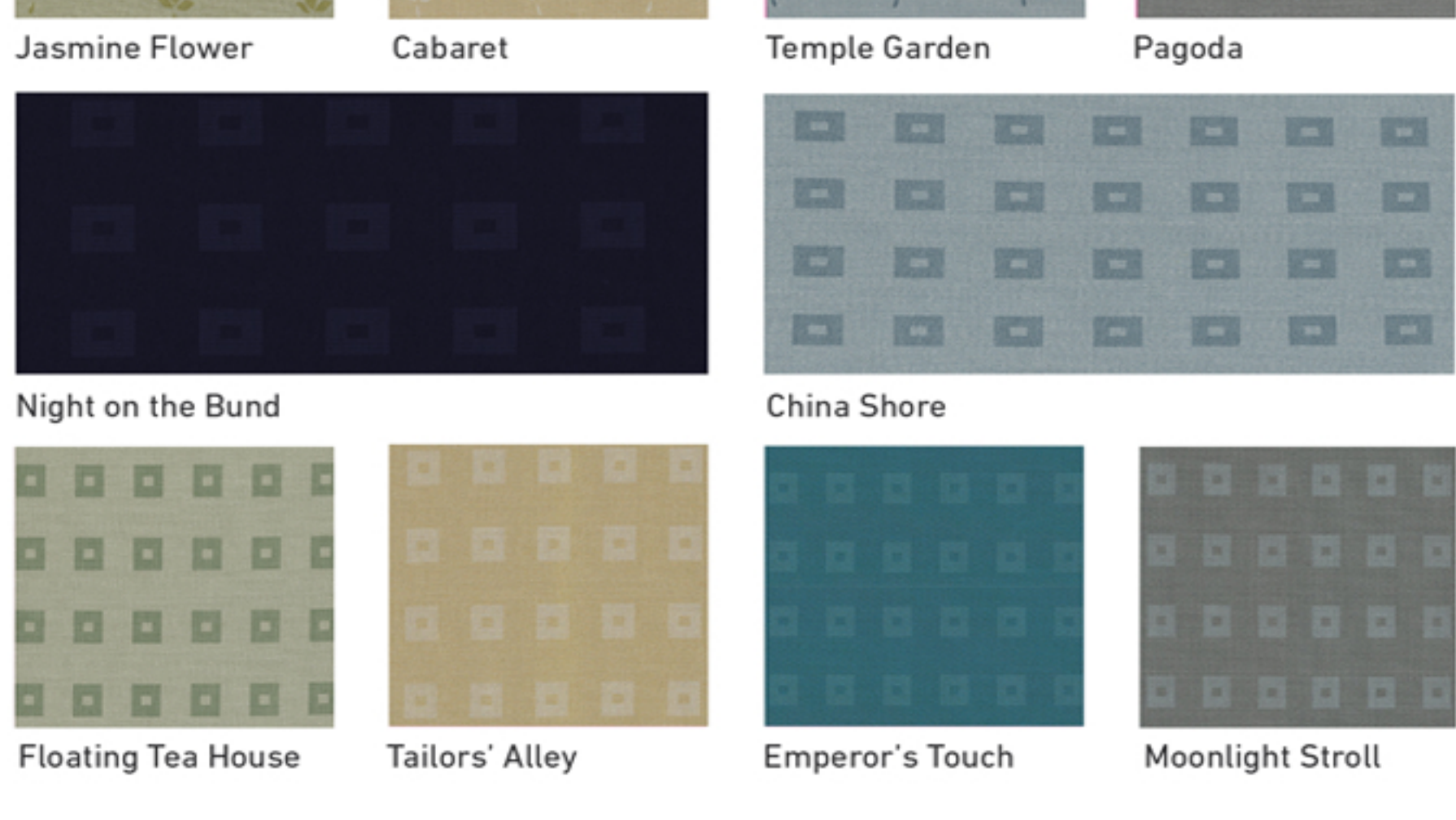


Prism



Classic

Gemstone



Rhapsody



Spiro



Lazy Time

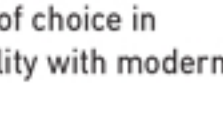


Shanghai Chic

Typical production figures meeting the highest industry quality as set by the Grade-X standards (BS 5790 Part 1 1996 Type 2)

Nominal Roll Length	Width	Total Weight	Average Thickness	Bursting Strength	Abrasion Martindale	Printwear
m	cm	gsm ± 5%	mm	Kpa/m ²	rubs	greyscale
25	137	900	1.25/1.3	1000	>150,000	4-5

Please note Napoli Hides, Suede, Spiro and Prism, are formulated to be lighter and more flexible, with a thickness of just over 1 mm, making them especially suitable for furniture designs that are challenging to upholster. For their full specification details please contact us.



FIRE RETARDANCY

BS 5852 Ignition Source 5, BS 7176 Medium Hazard, BS EN 1021-1 and BS EN 1021-2. Furniture and Furnishings Regulations Schedule 4 & 5, FMVSS 302, IMO A 652 (16), CAA-8, Méthode du Brûleur Électrique: Classification M2, DIN 53438 Teil 3, DIN 4102 Teil 1, DIN 4102 Class B. For DIN 53431 and BS-5852 Crib-7 requirements please contact us.

PROTECTION

Shielding Life against Infection ProMedical is highly combative and proven to counter the spread of MRSA, E. coli, and other dangerous bacteria. It was developed in a unique collaboration between a leading British pharmaceutical company and one of Europe's industry giants. Contact us for more details.

RhinoGuard provides a high-tech additional undercoat to the fabric surface guaranteed to enhance wearability and extend the life of your furniture. All the polymer layers, and not just the skin coat, are also uniformly coloured with high-grade pigments. Contact us for more details.

Stain Erase is a specially formulated coating from the Netherlands that increases resistance to staining. Many stains that might otherwise prove indelible can be erased or significantly reduced. Please note, all stains must be cleaned immediately! The longer a stain is left in place the more permanent it will become. Dab tough stains with rubbing alcohol (isopropanol) and rinse with clean water. Do not attempt to clean with any other form of alcohol. ONLY Colour Heaven is treated with Stainerase. When cleaning all other vinyl fabrics in this range follow only the general cleaning instructions below.

GENERAL CLEANING

Expression fabrics are easy to clean and have been developed to retain their attractive appearance. Normal soiling can be removed with a damp, non-abrasive cloth. More obstinate stains should be washed with warm soapy water and gently rubbed with a soft brush, before rinsing with clean water, and drying. Vinyl fabric should always be kept clean. Greasy or oily stains, if not removed, can over time have a corrosive effect. Do not use detergents, chemical cleaners, solvents, bleaches, abrasives, wax polishes, leather cleaners, and aerosol sprays etc., as these may damage the surface of the material. Be wary of any products purporting to be vinyl cleaners. If in doubt, contact us for advice. Never machine wash or dry clean vinyl products.

QUALITY ASSURANCE, EXPERIENCE AND INNOVATION

For over half a century the CMI group has been serving leading industry with products widely recognised as benchmarks of excellence. While high-tech products ranging from X-ray repellent shields and bullet-proof linings to infrared absorbent materials are a testament to our technical know-how, our time and resources are also spent working closely with fashion designers to satisfy the demands of the high-end contract market. As a result, our materials have been the fabric of choice in sports stadiums, hotels, and conference centres across the globe. This new range combines uncompromising quality with modern style and design.

CMI Ltd, Suite 2, Vantage Court, Riverside Business Park, Parrock Road, Barrowford, Lancashire, BB9 6BP, UK
Tel: +44 (0)1282 420021 Fax: +44 (0)1282 831387

Committed to serving customers large and small with the highest measure of quality assurance and care.

WWW.EXPRESSIONFABRICS.COM