

CADET CONTEMPORARY 4

Indoor/Outdoor
Vinyl Upholstery

with **Acryltron**TM
Protective Coating



Upholstery



Flame Retardant

350,000
MARTINDALE
RUBS

Abrasion



Waterproof



Outdoor
& Indoor



Anti-Microbial



Stain Resistant



Phthalate
Free



Heavy Metals
Free



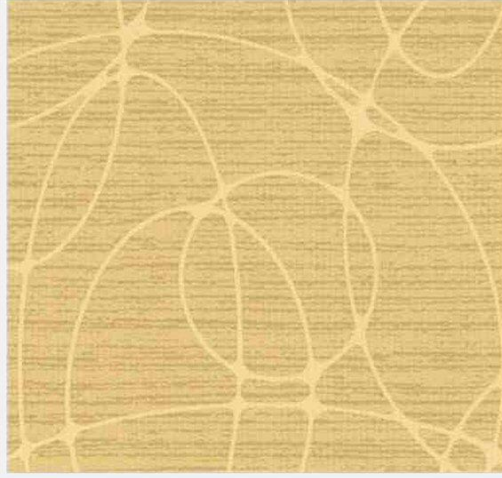
LATEX
FREE



Zest Mustard



Zest Hay



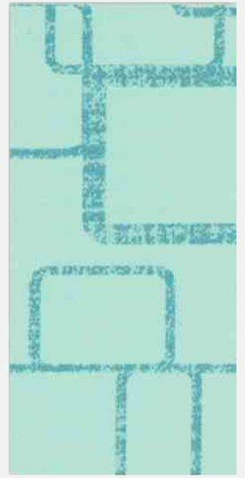
Venture Wheat



Amathus Sepia



Trek Duck Egg



Circuit Aqua



Zest Pacific



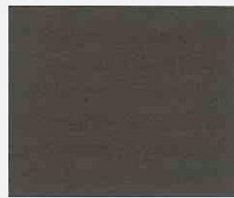
Amathus Mushroom



Zest Duck Egg



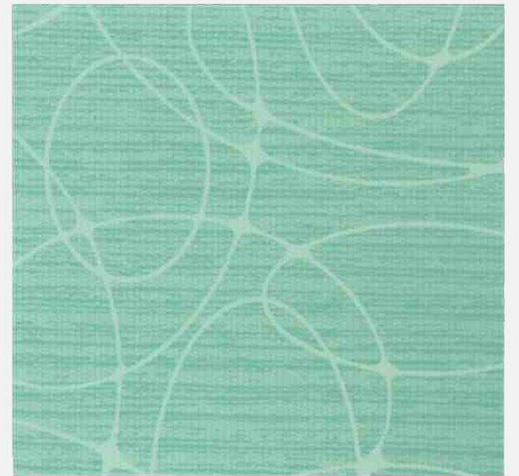
Etch Stone



Zest Mushroom



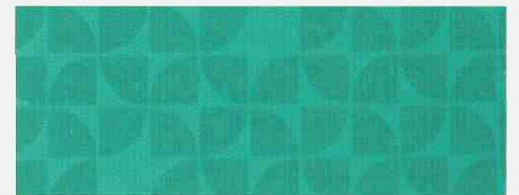
Zest Putty



Venture Duck Egg



Venture Mushroom



Trek Seaform



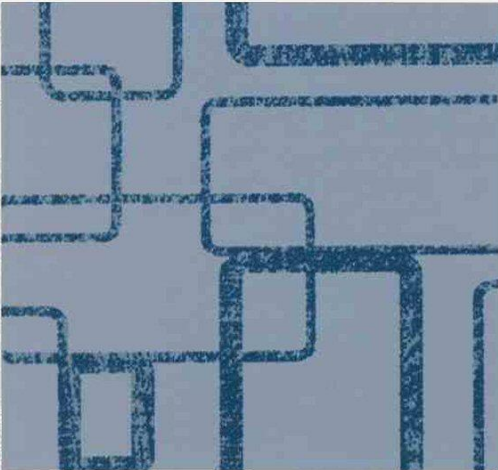
Amathus Navy



Trek Indigo



Zest Ink



Circuit Hyacinth



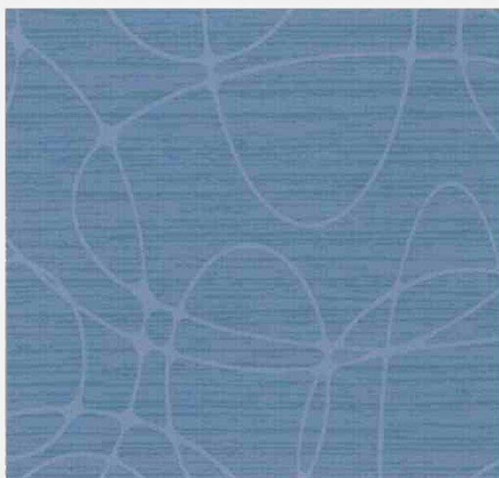
Zest Indigo



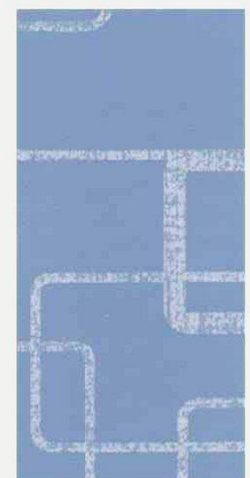
Etch Hyacinth



Zest Hyacinth



Venture Hyacinth



Circuit Sky



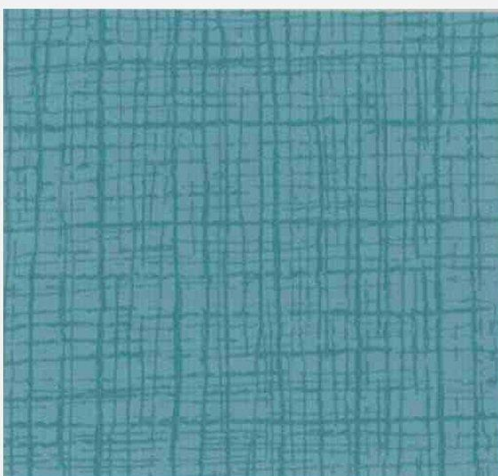
Amathus Azure



Zest Sky



Zest Seafoam



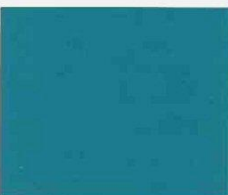
Etch Ocean



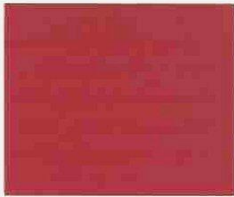
Zest Royal



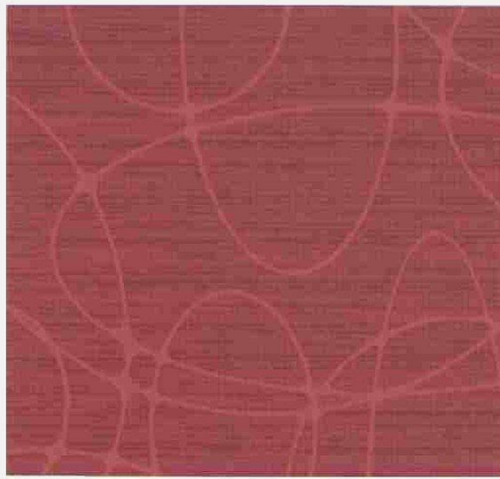
Etch Wedgewood



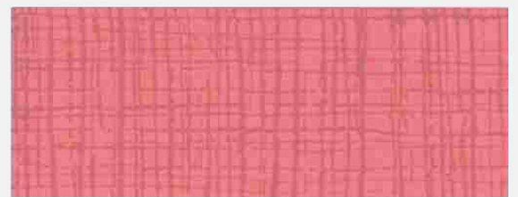
Zest Teal



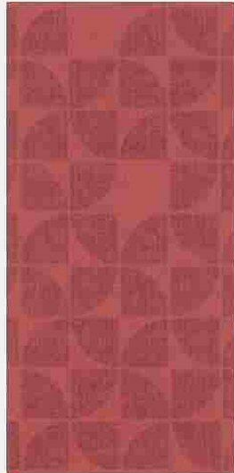
Zest Vermillion



Venture Rose



Etch Peony



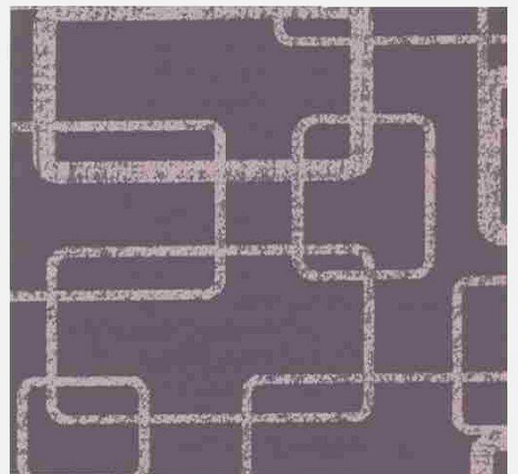
Trek Rose



Zest Cherry



Zest Peony



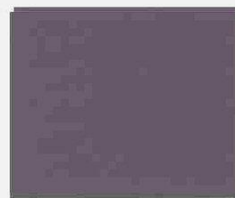
Circuit Grape



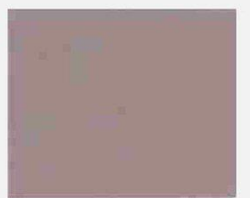
Zest Mulberry



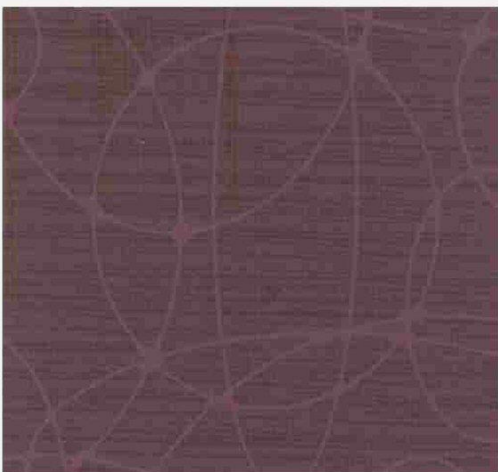
Amathus Grape



Zest Grape



Zest Thistle



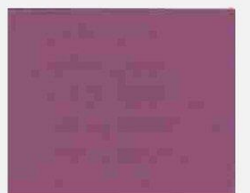
Venture Mulberry



Etch Mauve



Trek Mulberry



Zest Cerise

CADET CONTEMPORARY 4

DESIGN	COMPOSITION	APPLICATION	WEIGHT	WIDTH	ABRASION	REPEAT	BURST STRENGTH	COLOUR FASTNESS TO LIGHT	COLOUR FASTNESS TO WEATHERING	COLOUR FASTNESS TO CHLORINATED WATER	COLOUR FASTNESS TO SEAWATER	COLOUR FASTNESS TO RUBBING	FLAMMABILITY RATINGS							
													WATERPROOF	Medium Hazard	BS7176	BS5952 2006	EN 1021-1/2	M2 France	NFPA 260 USA	CAL TB 116 & 117
AMATHUS	Coating: PVC/Acrylic PU Basecloth: Viscose/Polyester	Contract & Heavy Domestic Upholstery	Approx 720g/m ² +/-5%	Approx 137cms (54")	350,000 Martindale Rubs 100,000 Wyzenbeek DR	Height Repeat: Approx 4.5cms (1.8") Side Repeat: Approx 3.7cms (1.5")	1350 kPa	Grade 5+	Grade 7	Grade 4-5	Grade 4-5	Wet >4 Dry >4	•	•	•	•	•	•	•	•
CIRCUIT	Coating: PVC/Acrylic PU Basecloth: Viscose/Polyester		Approx 720g/m ² +/-5%	Approx 137cms (54")	350,000 Martindale Rubs 100,000 Wyzenbeek DR	Height Repeat: Approx 18.3cms (7.2") Side Repeat: Approx 19.5cms (7.7")	1350 kPa	Grade 5+	Grade 7	Grade 4-5	Grade 4-5	Wet >4 Dry >4	•	•	•	•	•	•	•	•
ETCH	Coating: PVC/Acrylic PU Basecloth: Viscose/Polyester		Approx 720g/m ² +/-5%	Approx 137cms (54")	350,000 Martindale Rubs 100,000 Wyzenbeek DR	Nil	1350 kPa	Grade 5+	Grade 7	Grade 4-5	Grade 4-5	Wet >4 Dry >4	•	•	•	•	•	•	•	•
TREK	Coating: PVC/Acrylic PU Basecloth: Viscose/Polyester		Approx 720g/m ² +/-5%	Approx 137cms (54")	350,000 Martindale Rubs 100,000 Wyzenbeek DR	Height Repeat: Approx 8cms (3.5") Side Repeat: Approx 9.4cms (3.7")	1350 kPa	Grade 5+	Grade 7	Grade 4-5	Grade 4-5	Wet >4 Dry >4	•	•	•	•	•	•	•	•
VENTURE	Coating: PVC/Acrylic PU Basecloth: Viscose/Polyester		Approx 720g/m ² +/-5%	Approx 137cms (54")	350,000 Martindale Rubs 100,000 Wyzenbeek DR	Height Repeat: Approx 12.8cms (5") Side Repeat: Approx 18.2cms (7")	1350 kPa	Grade 5+	Grade 7	Grade 4-5	Grade 4-5	Wet >4 Dry >4	•	•	•	•	•	•	•	•
ZEST	Coating: PVC/Acrylic PU Basecloth: Viscose/Polyester		Approx 720g/m ² +/-5%	Approx 137cms (54")	350,000 Martindale Rubs 100,000 Wyzenbeek DR	Nil	1350 kPa	Grade 5+	Grade 7	Grade 4-5	Grade 4-5	Wet >4 Dry >4	•	•	•	•	•	•	•	•

RECOMMENDED CLEANING	<ul style="list-style-type: none"> ✓ Wipe clean routinely with a microfibre cloth lightly dampened with cold water only and then dry with a clean absorbent cloth. ✓ Soak up spillages as soon as possible with an absorbent dry cloth to prevent staining. ✓ If soiling has accumulated use a mild proprietary cleaner (non-alkaline). Take care to remove all soap residues and dry with a clean absorbent cloth. ✓ Remove body fluids and extreme soiling immediately (within 15 minutes) with cold water then apply approved infection control protocol: Haz Tabs, Chlor Clean or Shield Plus etc. As the concentration of bleach can vary greatly among proprietary brands we recommend these be avoided. Remove product residues and then dry with a clean absorbent cloth. ✗ Do not tumble dry. ✗ Do not dry clean. ✗ Do not fully immerse in water. ✗ Do not apply solvents, alcohol or any other chemical cleaners. ✗ Do not steam clean. <p>Note dyes and pigments from indigo jeans, ball point and felt tip pens may permanently stain.</p>
-----------------------------	--

CONTINUITY	Although every effort is made to ensure that fabrics ordered match the colours in this pattern card, slight variations may occur from batch to batch.
-------------------	---

Please note Panaz reserve the right to update product specification at their discretion.

© Panaz own the copyright of all designs shown in this pattern card, any infringement of which will be actioned by law.



For further information please visit
www.panaz.com



BV 2690/19

Head Office
Panaz Ltd.
Bentley Wood Way
Hapton, Burnley
Lancashire, BB11 5ST
England
Tel: +44 (0)1282 696969
email: sales@panaz.co.uk



Panaz USA Inc
Access Office Business Center
8801 Fast Park Drive
Suite 301
Raleigh, NC 27617
USA
Tel: +1 919 747 8211
Fax: +1 919 870 9045
email: sales@panaz.com